

## 2 ankana

### Table of Contents

- | [Property Details](#)
- | [Photo Gallery](#)
- | [Map](#)
- | [Contact For Inspection](#)

## Property Details

**2 Ankana Crescent, GOONELLABAH**



**SOLD BY THE WAL MURRAY TEAM**

**3**  **1**  **1** 

Often sought but rarely found this neatly presented lowset brick and tile home offers a fabulous opportunity for first home buyers and investors alike.

- 3 Bedrooms
- 1 Bathroom
- 1 Carport
- Air Conditioning
- Built In Robes

Nestled amongst neatly established gardens this property is ready for the new owners to simply relax and enjoy.

Inside you will find 3 bedrooms, master bedroom with air-conditioning and full length mirror built-in robes. Tidy bathroom complete with shower, bath, vanity and a separate toilet. Living areas consist of separate lounge with carpets, timber blinds and large windows overlooking the gardens. The original single garage has been converted to extra storage or rumpus room and features cork look vinyl floors, air-conditioning and a cosy woodfire. Spacious meals area with access to the rear yard and lovely kitchen with gas stove, rangehood, lots of cupboards and benchspace.

The rear yard is terraced to provide a nice level entertainment or kids play area with established gardens and a garden shed. Car accommodation is catered for with single carport that has a roller door fitted.

Located in convenient position of Goonellabah handy to shopping centre, school and bus service.

2 Ankana Crescent Goonellabah is a place you will love to call home.

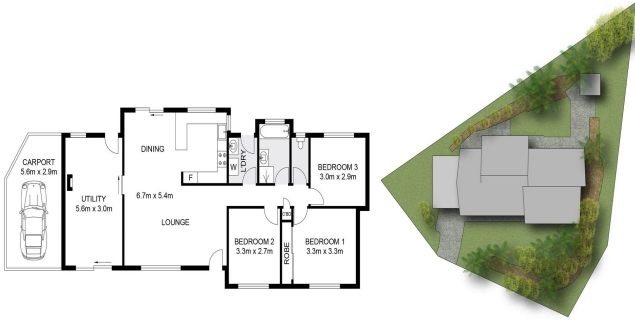
---

**\$519,000**

## Photo Gallery







SITE PLAN

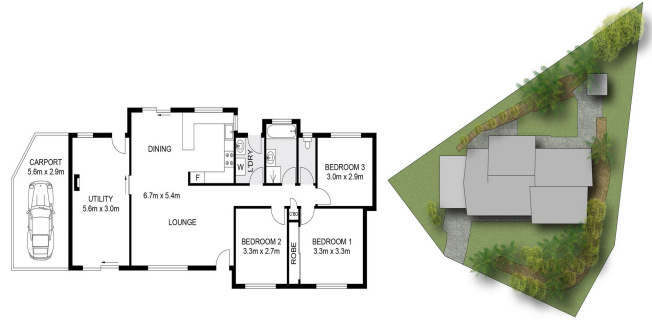
Dimensions are approximate. All information contained herein gathered from sources we believe to be reliable. However we cannot guarantee its accuracy and interested persons should rely on their own enquiries. © visionmedia/austr 2021.

**2 Ankana Crescent, Goonellabah**

INT : 99.4m<sup>2</sup>  
 CARPORT : 15.2m<sup>2</sup>



first national  
 REAL ESTATE  
 Wal Murray & Co



SITE PLAN

Dimensions are approximate. All information contained herein gathered from sources we believe to be reliable. However we cannot guarantee its accuracy and interested persons should rely on their own enquiries. © visionmedia/austr 2021.

**2 Ankana Crescent, Goonellabah**

INT : 99.4m<sup>2</sup>  
 CARPORT : 15.2m<sup>2</sup>



first national  
 REAL ESTATE  
 Wal Murray & Co

## Map



## Contact For Inspection

---