



**first  
national**  
REAL ESTATE

Zenith

Daniel Opalka

0438 329 625

9870 1000

danielo@zenithfn.com



151A Eastfield Road - Croydon

## Table of Contents

---

- [Property Details](#)
- [Property Images](#)
- [Floor Plan](#)
- [Video Walk Through](#)
- [Location Map](#)
- [Legal Docs](#)
- [Your Agent](#)



151A Eastfield Road - Croydon

## Property Details



### Multiple Living Zones Over Two Levels

Newly built to a quality rarely seen, you're sure to enjoy the multitude of living options available at this address. With living split over two levels, four spacious bedrooms and well-appointed living areas which provide an uncompromised standard of living, you may never want to leave.

A generously sized open-plan living/kitchen/dining room greets you upon entry and lends itself perfectly to entertaining friends and family with an easy flow to the rear courtyard through dual sliding doors. The U-shaped kitchen presents a faultless space to prepare home-cooked meals, with a double-sized oven, 5-burner gas cooktop and stone bench tops with breakfast bar, you're sure to impress.

The master bedroom is located on the ground floor and enjoys a spacious walk-in robe which leads to the private, fully tiled ensuite with dual vanities, while the three additional bedrooms located on the first floor enjoy an abundance of natural light and well appointed robes. The first floor also features the central bathroom and an additional living space with sizeable study nook, a perfect spot to create a home office or teenage retreat.

Located amongst schools such as Dorset Primary, Tinternvale Primary & Tintern Grammar, and nearby to Eastfield Park where you can enjoy a walk amongst nature to Croydon's Main Street which hosts an abundance of cafes and restaurants for you to enjoy. Also just minutes away from Croydon Station and Eastfield Shopping Centre.

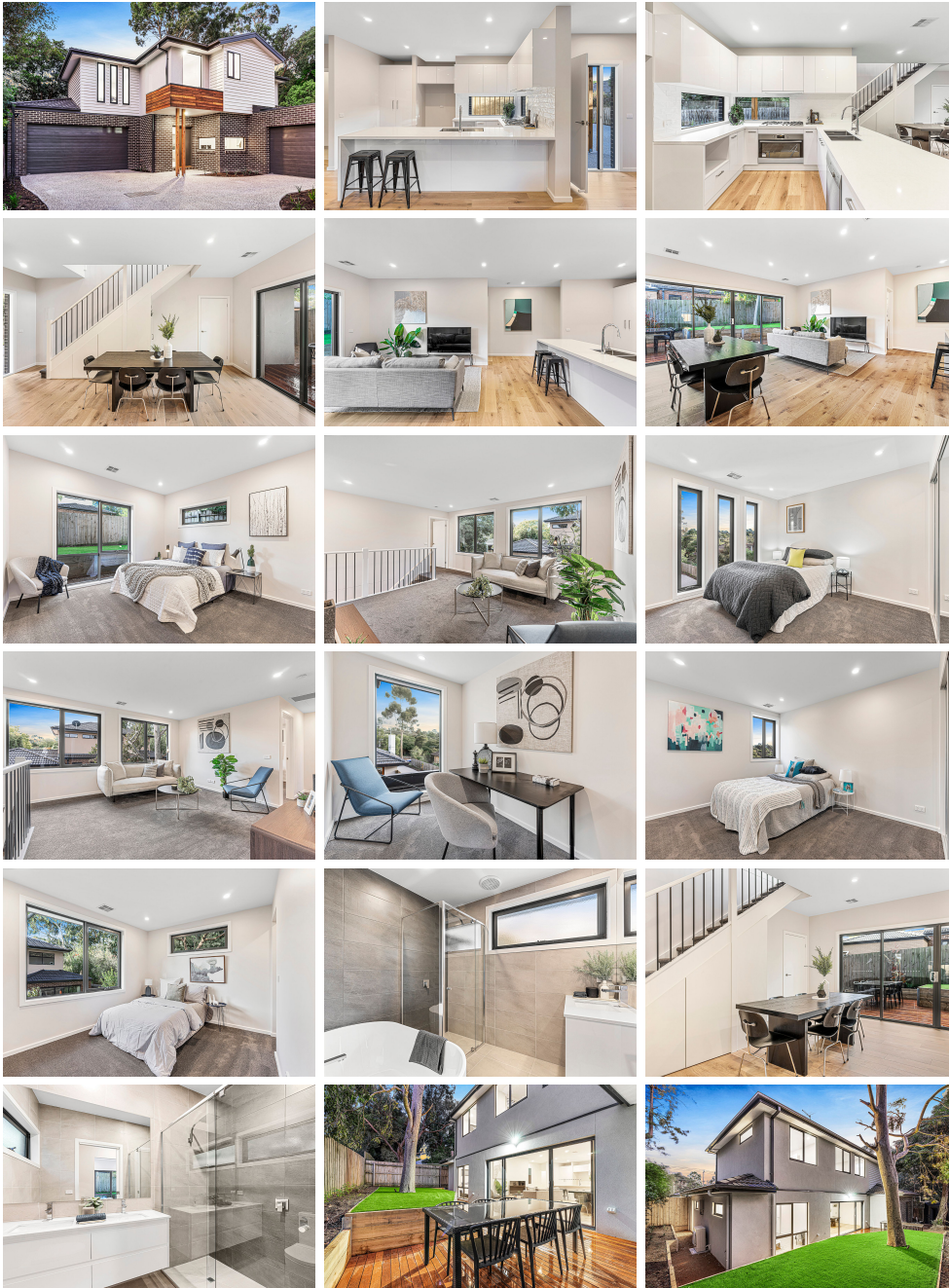
- ? Spacious living over two levels
- ? Well-appointed kitchen with quality appliances
- ? Low-maintenance living with entertainers courtyard
- ? Nearby to schools & parklands

\$750,000 to \$825,000



151A Eastfield Road - Croydon

## Property Images Picture living here





**first national**  
REAL ESTATE

Zenith

Daniel Opalka

0438 329 625

9870 1000

danielo@zenithfn.com



151A Eastfield Road - Croydon

## Floor Plan

### 151A Eastfield Road, Croydon



All measurements are in metres. This plan is not to scale and provided as marketing material. All measurements are approximate and for illustrative purposes only. We make no guarantee of the accuracy of the plan, and you should independently determine the suitability of the property for your requirements.



**first  
national**  
REAL ESTATE

Zenith

Daniel Opalka

0438 329 625

9870 1000

[danielo@zenithfn.com](mailto:danielo@zenithfn.com)



151A Eastfield Road - Croydon

## Video Walk Though

---



**first  
national**  
REAL ESTATE

Zenith

Daniel Opalka

0438 329 625

9870 1000

danielo@zenithfn.com



151A Eastfield Road - Croydon

## Location Map





**first  
national**  
REAL ESTATE

Zenith

Daniel Opalka

0438 329 625

9870 1000

danielo@zenithfn.com



151A Eastfield Road - Croydon

## Legal Docs

---

[Statement of Information](#)



**first  
national**  
REAL ESTATE

Zenith

Daniel Opalka

0438 329 625

9870 1000

[danielo@zenithfn.com](mailto:danielo@zenithfn.com)



151A Eastfield Road - Croydon

## Your Agent

Thanks for viewing this property eBook for 151A Eastfield Road CROYDON. if you have any questions or would like to view the property then please don't hesitate to contact me.

Kind Regards,



Daniel Opalka

0438 329 625

[danielo@zenithfn.com](mailto:danielo@zenithfn.com)