

9/112 Esmonde

Table of Contents

- | [Property Details](#)
- | [Photo Gallery](#)
- | [Map](#)
- | [Contact For Inspection](#)

Property Details

9/112 Esmonde Street, EAST LISMORE



SOLD BY THE WAL MURRAY TEAM

2  **1**  **0** 

Located in the over 55+ Complex Twin Palms in East Lismore this single level two bedroom unit is within walking distance to the Wyrallah Road Shopping Centre, St Vincents Hospital and public transport making it a perfect package for retirees.

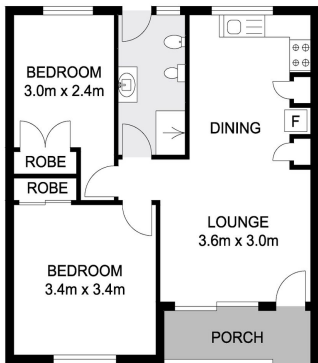
Featuring 2 bedrooms both with built-in wardrobes and the main with an air-conditioning system. This unit has a spacious kitchen/living area with a small patio out the back with garden shed. There is also a front sitting area to enjoy your morning coffee.

- 2 Bedrooms
- 1 Bathroom
- Air Conditioning
- Built In Robes

\$219,000

Photo Gallery





0 1 2 3 4 5

Scale in meters, indicative only. Dimensions are approximate. All information contained herein gathered from sources we believe to be reliable. However we cannot guarantee its accuracy and interested persons should rely on their own enquiries.

INT : 50.20m²
EXT : 3.90m²

9/112 Esmonde St, Lismore

first national
Wal Murray & Co

Map



Contact For Inspection



CORY BYRNE

LICENSED REAL ESTATE AGENT

0447 128 150

cory@walmurray.com.au