

10 Nielson Street

Table of Contents

- | [Property Details](#)
- | [Photo Gallery](#)
- | [Map](#)
- | [Contact For Inspection](#)

Property Details

10 Nielson Street, EAST LISMORE



SOLD BY THE WAL MURRAY TEAM

5  **2**  **0** 

Located in popular East Lismore is this brick and tile home ready for its next owner.

Upstairs features a neat and tidy kitchen with all electric appliances with separate dining/meals area. Spacious lounge room that opens onto the front verandah, updated bathroom with combined laundry and separate toilet.

Downstairs features another two bedrooms with separate lounge area and family room that could be utilised as a 6th bedroom, along with a second bathroom and laundry this area would be perfect for the extended family or a multitude of possibilities.

While there is no formal garage or car accommodation there is ample concreted area around the home to allow for the addition of a carport or similar STCA. Having a previous rental income of \$580 per week this home would also make an excellent investment.

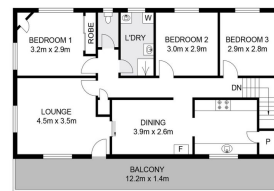
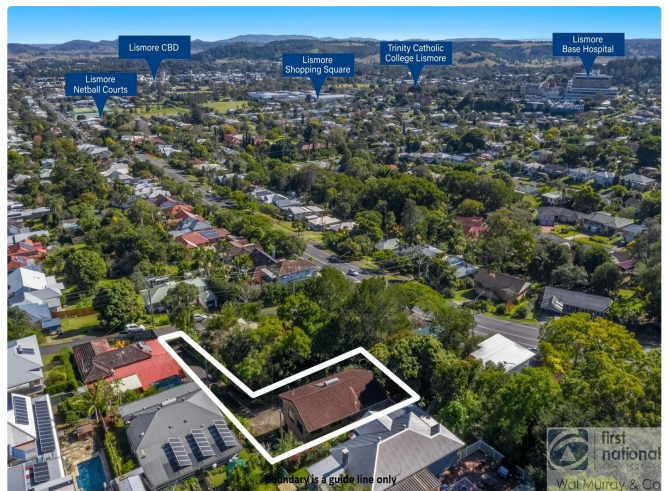
Call today to arrange your inspection.

\$529,000

- 5 Bedrooms
- 2 Bathrooms
- 2 Toilets
- Balcony

Photo Gallery

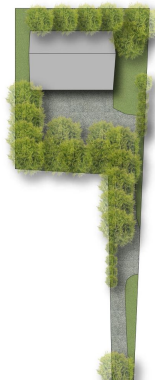




UPPER LEVEL



LOWER LEVEL

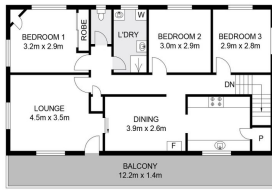


Dimensions are approximate. All information contained herein is gathered from sources we believe to be reliable. However we cannot guarantee its accuracy and interested parties should rely on their own enquiries @ reasonable time 2021.

10 Nielson Street, East Lismore

INT: 163.8m²
EXT: 17.9m²





UPPER LEVEL



LOWER LEVEL



SITE PLAN

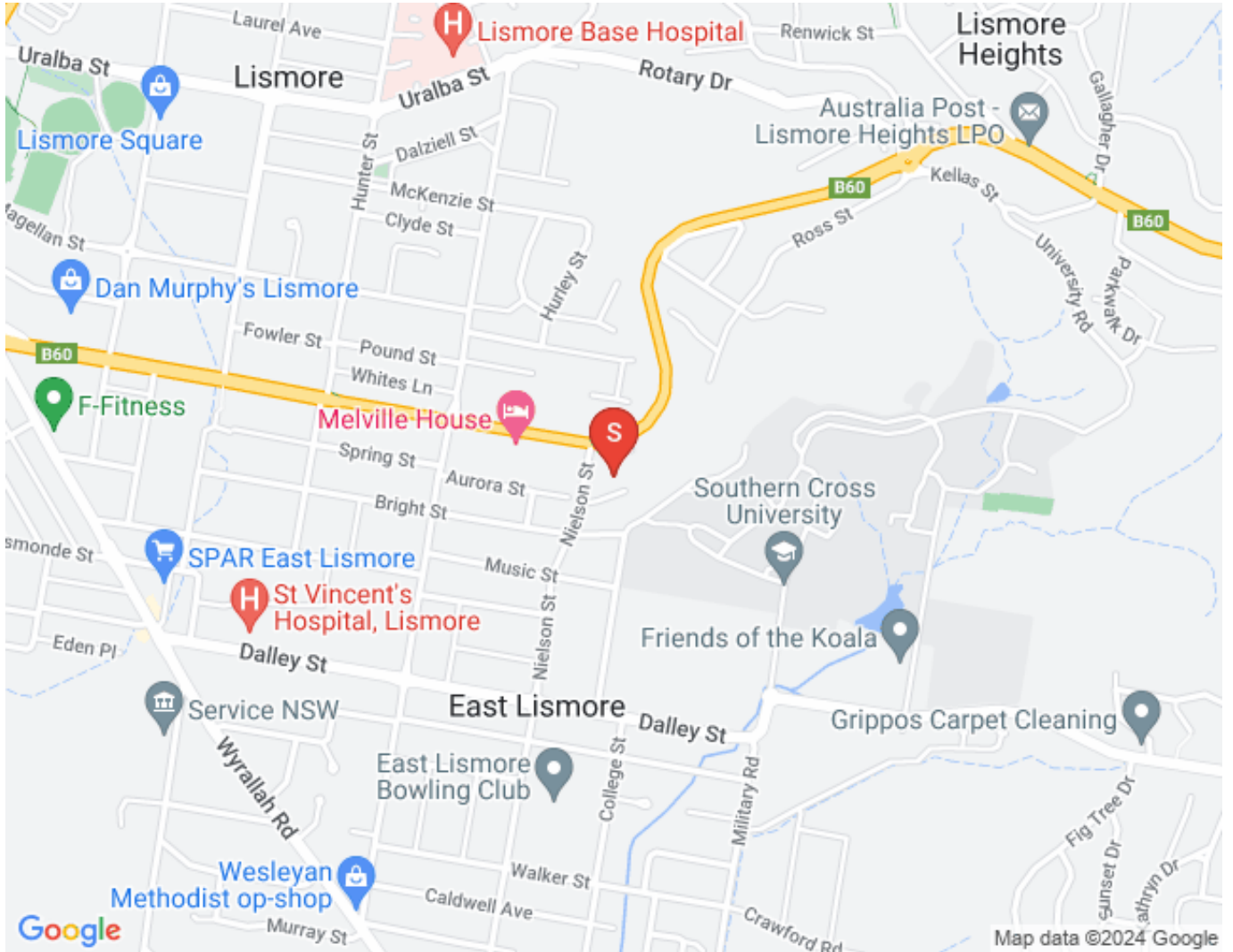
Dimensions are approximate. All information contained herein gathered from sources we believe to be reliable. However we cannot guarantee its accuracy and interested persons should rely on their own enquiries & measurements 2021.

10 Nielson Street, East Lismore

INT : 163.8m²
EXT : 17.9m²



Map



Contact For Inspection



CORY BYRNE

LICENSED REAL ESTATE AGENT

0447 128 150

cory@walmurray.com.au