

6 wyreema

Table of Contents

- | [Property Details](#)
- | [Photo Gallery](#)
- | [Map](#)
- | [Contact For Inspection](#)

Property Details

6 Wyreema Avenue, GOONELLABAH



SOLD BY THE WAL MURRAY TEAM

4  3  1 

This truly unique home has the magical feel of a story book treehouse with a 3 level design set amongst the trees and green leafy surrounds. Spacious multiple living areas, outdoor decks and charming features throughout, this home will make the next buyer fall in love.

On the middle level of the home is the large open plan living space with which opens out to the large timber deck, great for outdoor dining and entertaining friends. The kitchen has timber bench tops, stunning gas stove plus large walk-in pantry. There are 3 bedrooms on this level plus main bathroom with the spiraling staircase to both upstairs and downstairs.

The top level is a fantastic parents retreat, a large separate living room with adjacent main bedroom with ensuite.

On the bottom level ♦ the ideal children♦s retreat or space for the extended family/dual living. A large rumpus room, 5th bedroom, office plus 3rd bathroom. There's the opportunity for the next buyer to restore the older deck on this level creating another outdoor space.

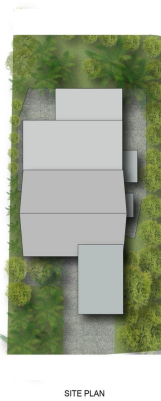
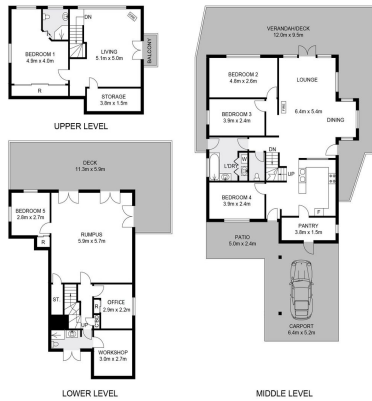
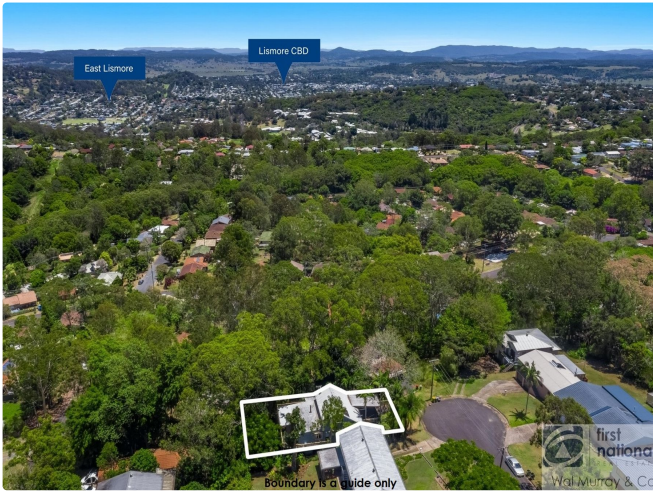
Such an interesting home with so much appeal. This home will suit a wide variety of buyers. Call today to arrange your inspection.

- 4 Bedrooms
- 3 Bathrooms
- 3 Toilets
- 1 Carport
- Study
- Rumpus Room
- Deck
- Floor boards

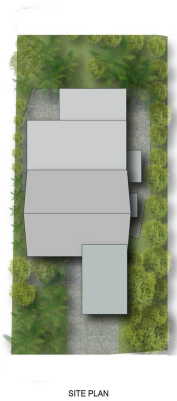
\$429,000

Photo Gallery





INT : 229.9m²
 EXT : 113.5m²
 CARPORT : 32.3m²



INT : 229.9m²
 EXT : 113.5m²
 CARPORT : 32.3m²

6 Wyreema Avenue, Goonellabah

6 Wyreema Avenue, Goonellabah

Map



Contact For Inspection



BENJAMIN CONTE

LICENSED REAL ESTATE AGENT

0408 368 913

ben@walmurray.com.au